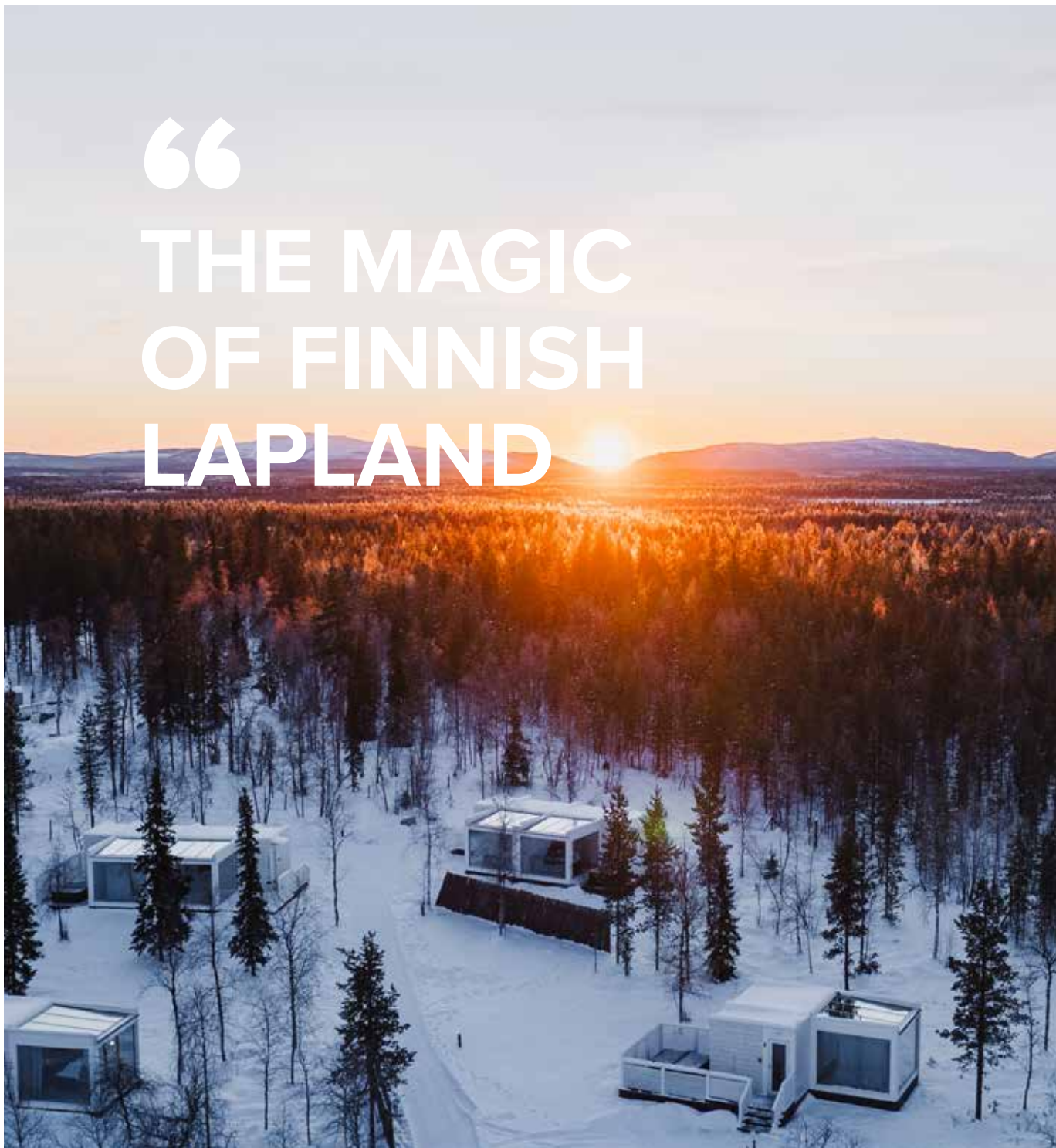




# “ THE MAGIC OF FINNISH LAPLAND



Northern Lights Ranch is a unique boutique hotel located in Finnish Lapland, 15 km from Levi Ski Resort and 30 km from Kittilä airport. Northern Lights Ranch combines tranquility, pure air and beautiful nature into an Arctic experience which is rare to come by.

Because of its remote location away from artificial light, Northern Lights Ranch offers the best chance to experience the amazing Northern Lights, which are often visible during the period from August until April.

# “ IDEAL LOCATION TO SEE THE NORTHERN LIGHTS

NORTHERN · LIGHTS  
R A N C H

LEVI  
15 km

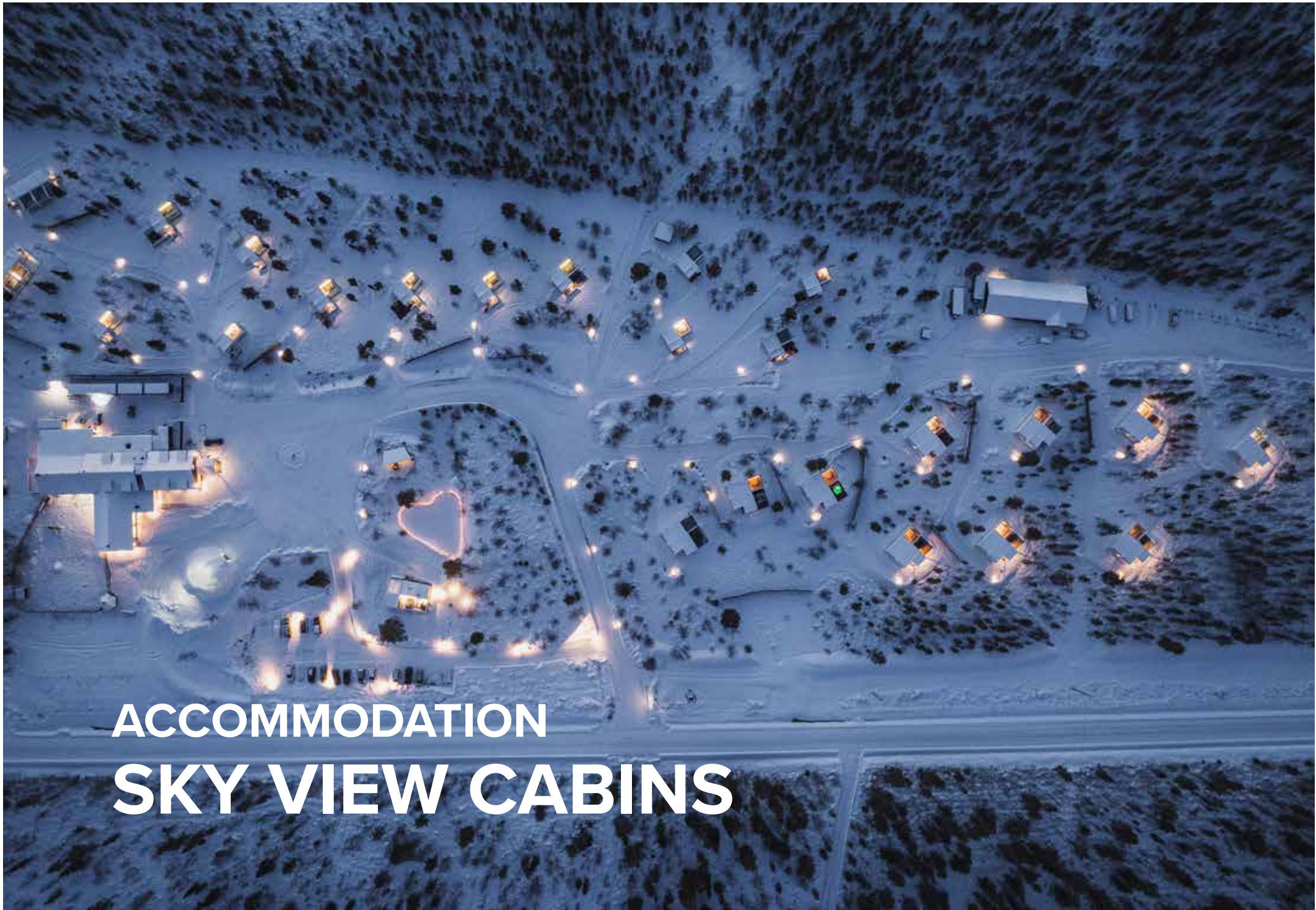
KITILÄ  
AIRPORT  
30 km



The Northern Lights in Lapland are visible from late August to mid-April at times when the weather is not cloudy and the solar activity is favourable for seeing the Northern Lights. Then light pollution is left as the biggest cause of not seeing the magic of the nature.

The image on the left is taken from a NASA satellite which indicates the amount of light pollution. The orange, yellow and light grey colours demonstrate the amount of light pollution caused by the built infrastructure such as streetlights, lights from the ski slopes and housing.

As the image indicates, Northern Lights Ranch is indeed located at the closest possible place to Levi Ski Resort without any light pollution and thus enabling the best chance to see the Northern Lights in the area.



**ACCOMMODATION**  
**SKY VIEW CABINS**

UNIQUE FORM OF ACCOMMODATION

# SKY VIEW CABINS

The accommodation units at Northern Lights Ranch are called Sky View Cabins, which are best described as very individual wooden cabins for two persons with huge, floor to ceiling windows and heated glass ceilings above the beds, offering perfect views of the Northern sky and the surrounding nature. On evenings with clear skies the view from inside the Sky View Cabins becomes simply breathtaking. The millions of stars are lit in the sky and very often the Northern Lights appear in the sky as well. To be able to experience this from the comfort of your own motorized bed in one of the Sky View Cabins is something that we regard as luxury here in Lapland, nearly 200 km above the Arctic Circle.

Northern Lights Ranch offers a total of 25 Sky View Cabins for accommodation. Of the 25 cabins 24 are individual stand-alone cabins and 2 cabins form 1 double cabin. All the different cabin types are described in more detail below.





# **SKY VIEW CABIN ROOM DESCRIPTIONS**

**NORTHERN LIGHTS RANCH FEATURES 6  
DIFFERENT TYPES OF SKY VIEW CABINS**

- **STANDARD**
- **SUPERIOR**
- **DELUXE**
- **DELUXE PLUS**
- **DOUBLE**
- **ULTIMATE**

All cabins have floor heating and air-to-air heat pumps which can be used for increasing and decreasing the heat based on preference. The heating in the glass ceilings melts away the snow and evaporates the water on rainy days allowing the clear views towards the sky.

The cabins are designed with careful thought in Scandinavian style and high standards to best fit to the extraordinary environment.

The cabins are furnished with motorized twin beds including ensuite bathrooms with a toilet, a shower, toiletries and hair dryers. The beds are aligned together as a double bed by default but can also be separated for twin bed use.

All the cabin types include a fridge / a mini bar, a coffee capsule machine and a water kettle. Free Wi-Fi is available in all cabins and a complimentary baby cot can always be provided by request to all the cabins.





**Sky View Cabin Standard** is a little smaller in size (21 sqm) than the other 5 cabin types. The additional space in the **Sky View Cabin Superior and Deluxe** models (both 25 sqm) include a separate entrance hallway and an alcove with a TV and sofa-bed, which can be used as a 140 cm wide extra bed for 1 adult or 1-2 children (3-12 yrs).

**Sky View Cabin Deluxe** has the equivalent floor plan as the Superior, but it also features its own outdoor hot tub on the terrace of the cabin. Enjoying the silence and the surrounding winter landscape from the hot tub is guaranteed to be something to remember for a lifetime.

**Sky View Cabin Double** consists of a Sky View Cabin Deluxe on one side and a Sky View Cabin with sauna on the other side. There are thick log walls and inter-connecting lockable soundproof doors in between the 2 cabins enabling the use of the cabin as one adjoining double cabin or as 2 separate cabins with the doors closed. In total the double cabin can accommodate up to 5 adults at once or even 6 persons when travelling with children when using the 140 cm wide extra bed in the alcove of the Deluxe.



**Sky View Cabin Deluxe Plus** is the latest addition to the cabins at Northern Lights Ranch completed in December 2023. The Sky View Cabin Deluxe Plus with Outdoor Hot Tub is in total 42 sqm in interior size and making it substantially larger than the Deluxe in terms of floor area.

**Deluxe Plus** cabins are also designed for 2-person use by default like the other cabin types. However, the new cabins can also be offered for 4-person use when the sofa-bed in the living room will be transformed into a 160 cm wide double bed. The living room offers the possibility of adding a 5th person to be accommodated in a separate 70 cm wide extra bed as well.

**Sky View Cabin Deluxe Plus** also features a kitchenette with a kitchen sink, dishwasher, microwave oven and a stove. The outdoor hot tub is designed for 4 persons. Overall, there are several new features in the cabin and the interior design is quite different with wooden floors and cross-laminated timber walls compared to the other models.

As the name suggests, **Sky View Cabin Ultimate** is the flagship of all the cabins at Northern Lights Ranch. Sky View Cabin Ultimate is the largest cabin type with a total 50 sqm in interior size and it has its own sauna and an outdoor hot tub for the guests to enjoy.

On the entrance side of the cabin there is the living room, open kitchen and an alcove with a TV. The sofa-bed in the living room can be transformed into a 160 cm wide extra bed for 2 persons and in the alcove another sofa-bed can also be used as a 140 cm wide extra bed for 1 additional adult or for 1-2 children (3-12 yrs.).

The other side of the cabin consists of the bedroom, the spacious bathroom with a separate toilet and the sauna. The terrace and the outdoor hot tub can be accessed directly from the bathroom wearing the provided bathrobes and slippers.



## ABOUT SKY VIEW CABIN

# STANDARD

AMOUNT OF CABINS: 3

Sky View Cabin Standard Cabin is an individual cabin for two persons with large windows and a heated glass ceiling above the beds. The Sky View Cabin Standards is a warm and cozy alternative for stargazing from the comfort of the motorized bed.

A great choice for a relaxed get away holiday for two.

---

## ROOM FACILITIES

- 21 m<sup>2</sup>
- 2 motorized twin beds
- Ensuite bathroom (toilet and shower)
- Toiletries
- Hair dryer
- Fridge / mini bar
- Coffee capsule machine
- Water kettle
- Heated glass ceiling above the beds
- Heated stone floors and air-to-air heat pump to increase/decrease heat
- Free Wi-Fi
- Free parking

---

## UPON REQUEST

- Complimentary baby cot



*There are two slightly different floor plans for the Sky View Cabin Standard. In both versions, the floor area, services, and amenities are however equivalent.*

**SKY VIEW CABIN STANDARD**

## ABOUT SKY VIEW CABIN

# SUPERIOR

AMOUNT OF CABINS: 4

Sky View Cabin Superior is a bit more spacious than the Standard model and offers a splendid view of the Northern sky and the surrounding nature. The Sky View Cabin Superior also includes an alcove behind a sliding door with a TV and a sofa-bed, which can be used as an extra bed for 1 adult or 1-2 children (3-12 yrs).

Superior Cabin is a great option for couples but also for families with small children.

---

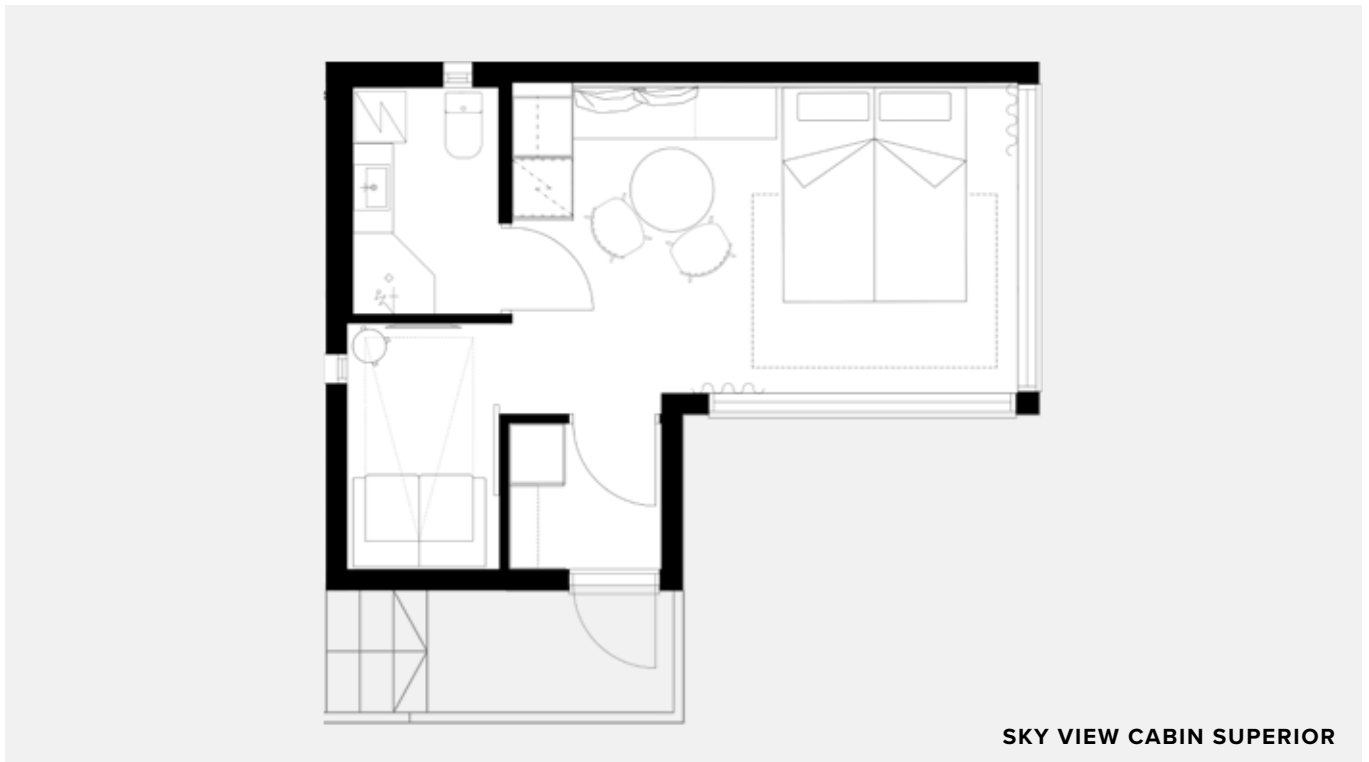
## ROOM FACILITIES

- 25m<sup>2</sup>
- 2 motorized twin beds
- Alcove with a sofa-bed and a flat screen 40-inch TV
- Ensuite bathroom (toilet and shower)
- Toiletries
- Hair dryer
- Fridge / mini bar
- Coffee capsule machine
- Water kettle
- Heated glass ceiling above the beds
- Heated stone floors and air-to-air heat pump to increase/decrease heat
- Free Wi-Fi
- Free parking

---

## UPON REQUEST

- Extra bed 140 cm for max. 1 adult or 2 children (3-12 yrs)
- Complimentary baby cot



SKY VIEW CABIN SUPERIOR

## ABOUT SKY VIEW CABIN

# DELUXE

### AMOUNT OF CABINS: 5

Sky View Cabin Deluxe is the equivalent cabin type as the Superior apart from the private outdoor hot tub on the terrace. Enjoying the silence and the surrounding landscape from the luxury of your own hot tub is an experience you'll surely remember for a lifetime.

The large windows and a heated glass ceiling guarantee a splendid view of the Northern sky and the surrounding nature. Sky View Cabin Deluxe also includes an alcove behind a sliding door with a TV and a sofa-bed, which can be used as an extra bed for 1 adult or 1-2 children (3-12 yrs).

Sky View Cabin Deluxe upgrades your holiday to an unforgettable bucket list experience.

---

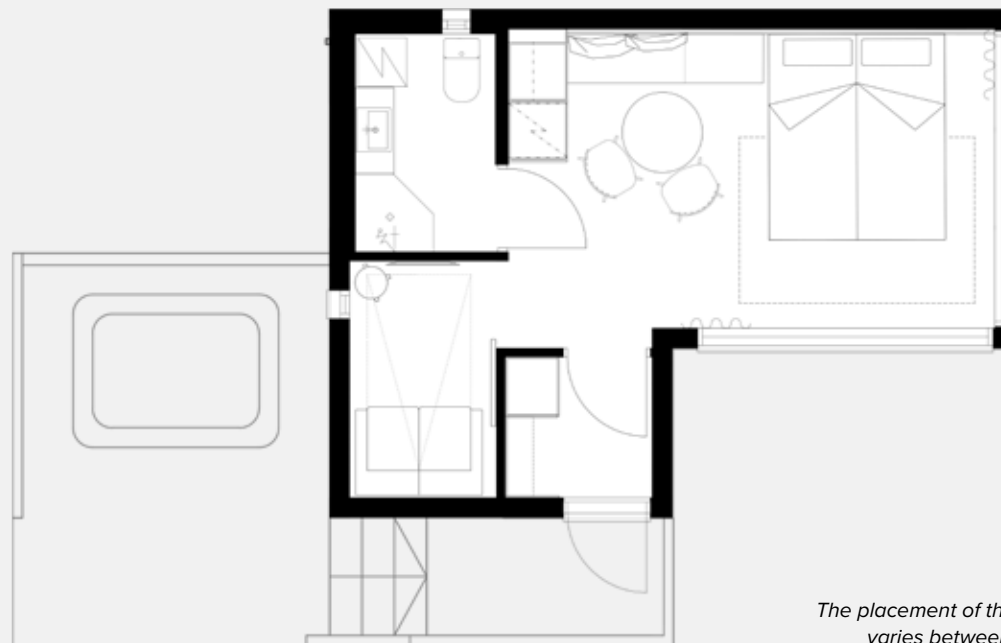
### ROOM FACILITIES

- 25m<sup>2</sup>
- 2 motorized twin beds
- Private outdoor hot tub (heated 24/7)
- Alcove with a sofa-bed and a flat screen 40-inch TV
- Ensuite bathroom (toilet and shower)
- Bathrobes and slippers
- Toiletries
- Fridge / mini bar
- Coffee capsule machine
- Water kettle
- Heated glass ceiling above the beds
- Heated stone floors and air-to-air heat pump to increase/decrease heat
- Free Wi-Fi
- Free parking

---

### UPON REQUEST

- Extra bed 140 cm for max. 1 adult or 2 children (3-12 yrs)
- Complimentary baby cot



*The placement of the outdoor hot tub varies between different cabins.*

### SKY VIEW CABIN DELUXE WITH OUTDOOR HOT TUB

ABOUT SKY VIEW CABIN

# DELUXE PLUS

AMOUNT OF CABINS: 10

Sky View Cabin Deluxe Plus is the newest cabin model, and all 10 units were completed and taken into use in December 2023. The interior design of the cabins creates a peaceful atmosphere with wooden floors and cross-laminated timber walls.

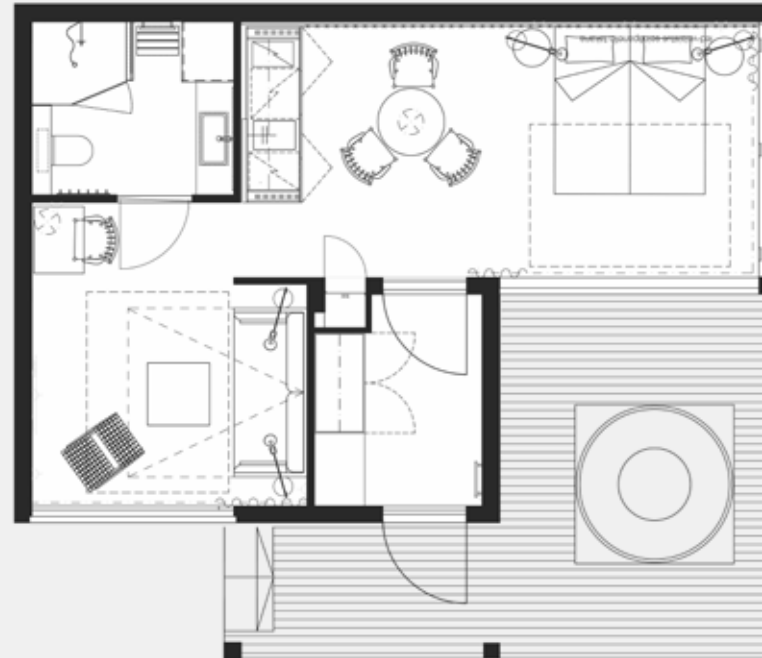
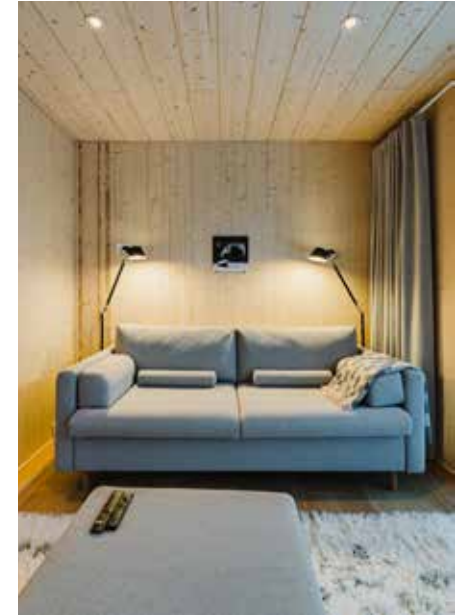
Sky View Cabin Deluxe Plus has a master with large windows, a heated glass ceiling, a kitchenette and a dining table. The kitchenette can be open or left behind large closing doors.

The spacious living room boasts a 65-inch TV mounted on the wall. The ample space of the living room allows to accommodate up to 4-5 persons in the cabin with comfort. The sofa-bed in the living room can be transformed into a 160 cm wide extra bed for 2 persons and the footstool can be turned into a 70 cm wide extra bed for a 5<sup>th</sup> person. The sliding door to the living room adds also privacy when the sofa-bed is in use.

The cabins feature a large terrace with a private outdoor hot tub designed for 4 persons.

Sky View Cabin Deluxe Plus is an ideal option for 1-2 couples or a family.

Enjoy the luxury of your private outdoor hot tub and gaze at the nightly sky. With a bit of luck, the sky will be filled with stars or a show of Northern Lights you'll remember for a lifetime. ►



SKY VIEW CABIN DELUXE PLUS WITH OUTDOOR HOT TUB

ABOUT SKY VIEW CABIN

# DELUXE PLUS

## ROOM FACILITIES

- 42m<sup>2</sup>
- 2 motorized twin beds
- Private outdoor hot tub (heated 24/7)
- Living room with a sofa-bed, flat screen 65-inch TV and a working desk
- Ensuite bathroom (toilet and shower)
- Bathrobes and slippers
- Toiletries
- Hair dryer
- Kitchenette including kitchen sink, dishwasher and, microwave oven and stove
- Cooking utensils, glasses, cups, plates and cutlery
- Fridge / mini bar
- Coffee capsule machine
- Water kettle
- Heated glass ceiling above the beds
- Heated stone floors in the entrance hallway and bathroom & heated wooden floors in the bedroom and living room
- Air-to-air heat pump to increase/decrease heat
- Free Wi-Fi
- Free parking

---

## UPON REQUEST

- Extra bed 160 cm for 2 persons
- Extra bed 70 cm for max. 1 person
- Complimentary baby cot



## ABOUT SKY VIEW CABIN

# DOUBLE

AMOUNT OF CABINS: 1

Sky View Cabin Double consists of two individual cabins connected by 2 soundproof doors in between the 2 cabins which can be left open or closed based on preference. On one side is the equivalent space and amenities as in the Sky View Cabin Deluxe with an outdoor hot tub on the terrace and the other side is a cabin with a private sauna. Both sides are designed for 2 persons and the other side has the possibility of adding an extra bed for a 5th person or 2 children in the alcove behind a sliding door.

Pamper yourself with the luxury of a private outdoor hot tub and sauna while enjoying the views of the starlit sky, hopefully coloured by the appearance of the Northern Lights.

The Sky View Cabin Double is the perfect choice for families with children or for 2 couples alike.

---

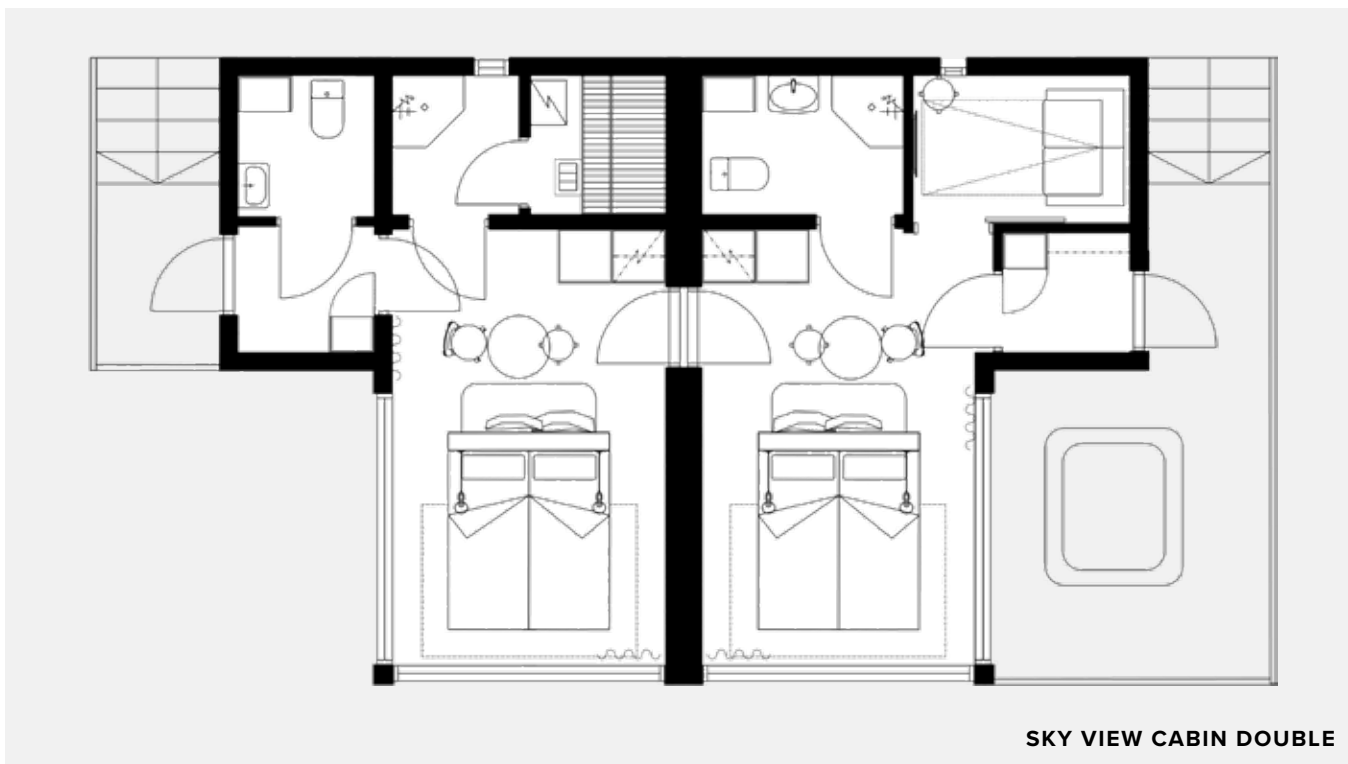
## ROOM FACILITIES

- 2 x 25 m<sup>2</sup> = total 50 m<sup>2</sup>
- 4 motorized twin beds
- TV corner with a flat screen TV
- 2 x ensuite bathrooms with toilet and shower
- Bathrobes and slippers
- Toiletries
- 2 x hair dryer
- 2 x fridge / mini bar
- 2 x coffee capsule machine
- 2 x water kettle
- Heated glass ceilings above the beds
- Heated stone floors and air-to-air heat pump to increase/decrease heat
- Free Wi-Fi
- Free parking

---

## UPON REQUEST

- Extra bed 140 cm for max. 1 adult or 2 children (3-12 yrs)
- Complimentary baby cot



SKY VIEW CABIN DOUBLE

## ABOUT SKY VIEW CABIN

# ULTIMATE

### AMOUNT OF CABINS: 1

The Sky View Cabin Ultimate is the flagship of all the cabins at Northern Lights Ranch and it is the only cabin which has its own private sauna and a private outdoor hot tub for the guests to enjoy.

The entrance side of the cabin features a living room, an open kitchen and an alcove with a TV. The sofa-bed situated in the living room can be transformed into a 160 cm wide extra bed for 2 persons and in the alcove behind a sliding door another sofa-bed can also be used as a 140 cm wide extra bed for 1 additional adult or for 1-2 children (3-12 yrs.). The other side of the cabin consists of the bedroom, the spacious bathroom and private sauna along with a separate toilet.

The terrace and the outdoor hot tub can be accessed directly from the bathroom wearing the provided bathrobes and slippers. Try your private sauna and the outdoor hot tub in turns, the experience will make you feel totally relaxed and revitalized.

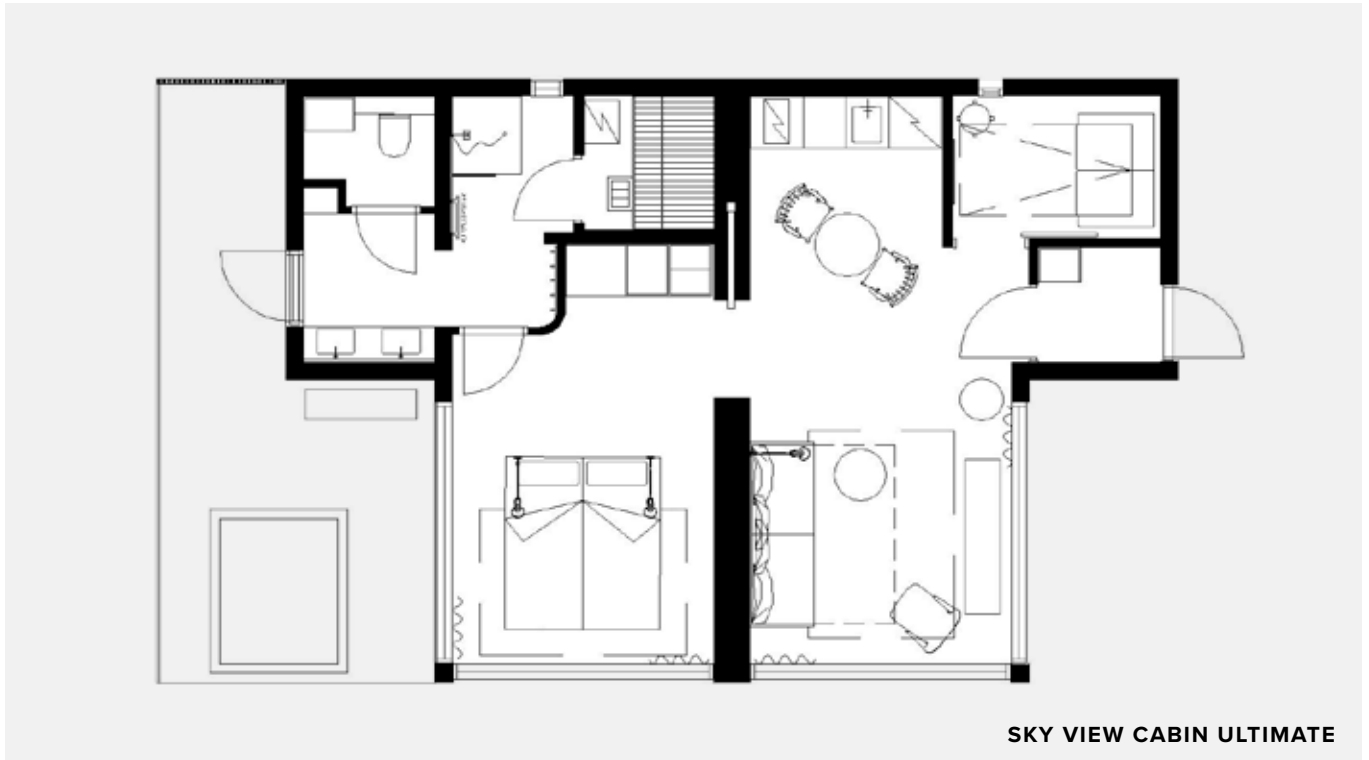


### ROOM FACILITIES

- 50m<sup>2</sup>
- 2 motorized twin beds
- Private outdoor hot tub (heated 24/7)
- Private sauna
- TV corner with a sofa-bed and flat screen 40-inch TV
- Ensuite bathroom (toilet and shower)
- Bathrobes and slippers
- Toiletries
- Hair dryer
- Kitchenette including kitchen sink, dishwasher and, microwave oven and stove
- Cooking utensils, glasses, cups, plates and cutlery
- Fridge / mini bar
- Coffee capsule machine
- Water kettle
- Free Wi-Fi
- Free parking

### UPON REQUEST

- Extra bed 160 cm for 2 persons
- Extra bed 140 cm for max. 1 adult or 2 children (3-12 yrs)
- Complimentary baby cot



SKY VIEW CABIN ULTIMATE

# UNIQUE RESTAURANT





# RESTAURANT

The restaurant at Northern Lights Ranch offers a variety of tasty Nordic delicacies with an international twist. The menu has been carefully planned by our head chef to ensure that the quality of the food meets with the high standards of the venue.

The use of local ingredients is highlighted in the menu. Arctic berries, mushrooms and herbs are all personally harvested by our head chef during the summertime. Our aim is always to create unique dining experiences which are hopefully remembered for a long time.

The restaurant consists of two separate dining rooms. The other one is a more rustic space with a more traditional Lappish interior design style and a high ceiling. The other space is more modern, and it is designed to be transformed into many different purposes making it an ideal space for group dinners and private parties. The dining rooms are connected

by our bar area, and both have a big fireplace creating a warm atmosphere with soothing music being played in the background.

The special feature of both dining rooms is also the illuminated reindeer enclosure, which is located just outside of the large windows of the dining room. There guests can observe our reindeer while dining and are also welcome to feed the reindeer by themselves.

In the same building we also have the reception and a small lobby bar. There guests can enjoy drinks and light snacks as well as find books and magazines to read or play some board games.

Table reservations can also be made by guests who are not staying with us. Table reservations need in all cases be made in advance which can conveniently be made online from [HERE](#).



# PRIVATE EVENTS AND MEETINGS





“  
**UNIQUE  
LOCATION  
FOR SPECIAL  
EVENTS**

## **PRIVATE EVENTS AND MEETINGS**

Northern Lights Ranch is the ideal destination for private events such as weddings, parties, and corporate meetings. Our high-quality restaurant facilities, located in the main building, provide a versatile setting for hosting gatherings of 10 to 130 guests in an unforgettable Arctic environment.

The facilities are divided into two distinct areas, accommodating 60 and 70 guests, respectively, with a dedicated bar area between them. When all spaces are used together, the total capacity expands to 150 guests. Each area features a cozy fireplace and large windows offering direct views of our reindeer enclosure, creating a truly unique and atmospheric setting.

One of the rooms is designed as a multifunctional space, making it perfect for a wide range of private events in our Arctic surroundings. This room is also ideally suited for meetings, equipped with all necessary AV technology, high-speed Wi-Fi, and excellent acoustics.

The table and chair arrangements in the multifunctional room are fully adaptable to your event's specific needs, accommodating up to 60 people for meetings, weddings, private parties, and more. Our restaurant and meeting facilities are available for bookings without the need for having accommodation bookings made with us and can be reserved throughout the season upon request.

Outside the high winter season (December to March), all of Northern Lights Ranch's facilities, including accommodations and the restaurant, can be booked exclusively for your group. For sole-occupancy bookings, we work with you from the very first step, tailoring every detail to your individual needs and offering the best available rates.

Contact us and let us help you create the most memorable private party, anniversary, or corporate event imaginable!



# THE MAGICAL WEDDINGS





# WEDDINGS

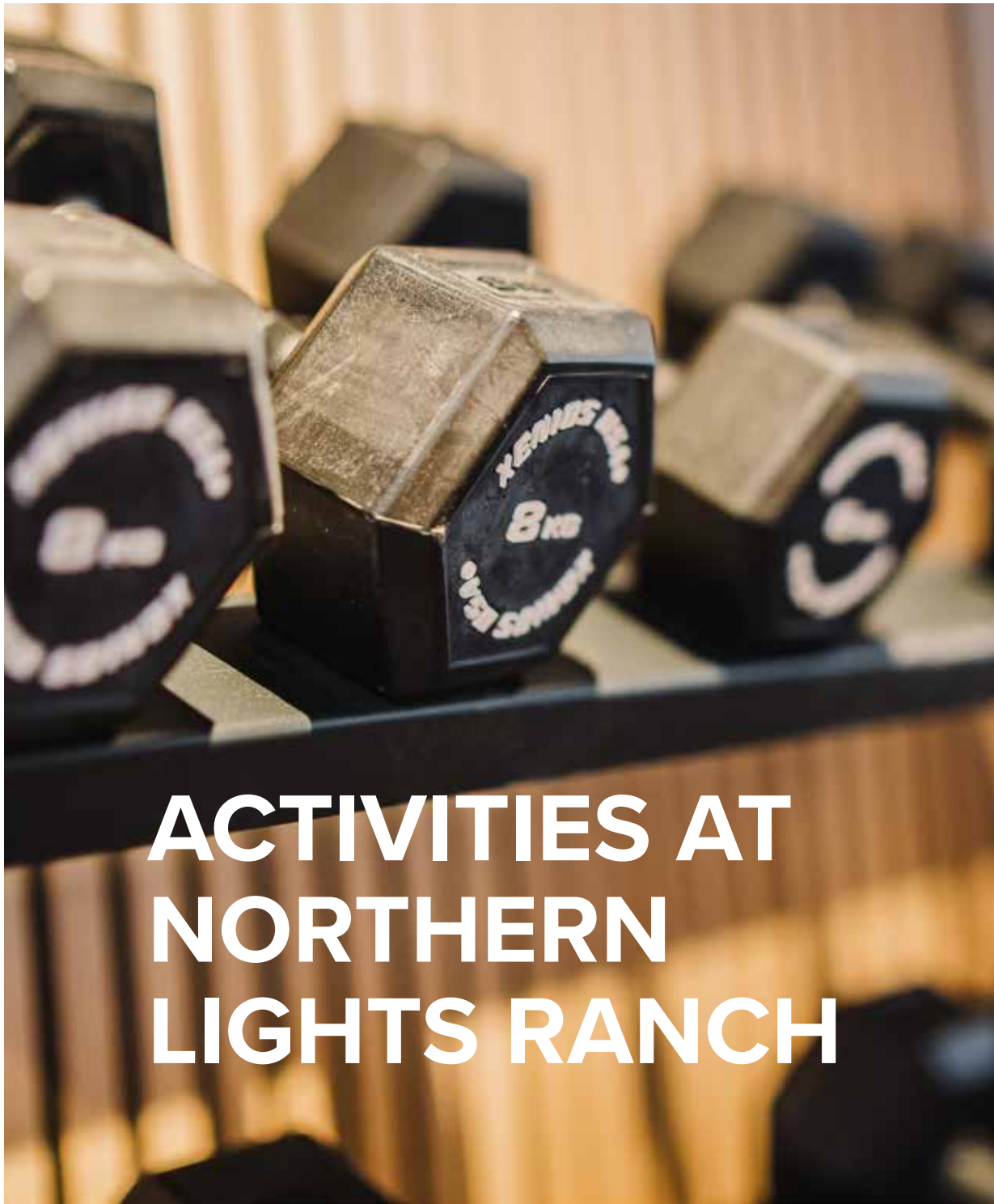
For weddings Northern Lights Ranch offers a chapel made of snow and ice. The chapel is always built during November, and it creates a truly magical venue for the special ceremony. The chapel is available for bookings from the beginning of December until March.

The facilities are best suitable for wedding parties of 20-100 persons, but smaller and larger parties can also be accommodated. The chapel can be booked individually for the wedding ceremony only or combined by using the restaurant facilities for the wedding reception.

Northern Lights Ranch co-operates with Sun & Snow Weddings, the market leaders among wedding organizers and planners in Lapland.

[www.sunandsnowweddings.co.uk](http://www.sunandsnowweddings.co.uk)





# ACTIVITIES AT NORTHERN LIGHTS RANCH





# COMPLIMENTARY ACTIVITIES AT NORTHERN LIGHTS RANCH

We have several activities to offer for our guests to enjoy while visiting us. The following activities are complimentary for all our guests including the needed equipment.

## Available All Year Round:

- **Bonfire & Fireplace Hut:** Relax by the fire, enjoy hot drinks, and roast marshmallows or sausages in a serene Arctic setting.
- **Reindeer Feeding:** Meet our friendly reindeer and feed them moss straight from your hand.
- **Gym Access:** Stay active in our modern and well-equipped gym with forest views available for our guests 24/7.

## Available During Wintertime:

- **Snowshoeing:** Explore a scenic 1.5 km snowshoe trail through snowy landscapes.
- **Ice-Skating:** Glide across our heart-shaped, illuminated ice-skating rink.
- **Toboggan Run:** Have fun sliding on our onsite toboggan run, suitable for all ages.

*None of the complimentary activities above need to be booked in advance and are always available for our guest subject to prevailing weather conditions.*





## SAUNA FACILITIES

To crown your stay with us, we recommend booking our lovely sauna facilities for a perfect end to a day at the Arctic region. The traditional Finnish sauna and the adjoining lounge along with the outdoor hot tub, cold water tub and outdoor fireplace on the terrace can be booked for private use at an hourly rate from [HERE](#). The facilities can be booked for up to 10 persons at once.



# ACTIVITIES BY OUR PARTNERS



If you are interested in booking different Arctic activities and experiences provided by our selected partners, then you can view the schedules and the variety of different activities from [www.theranchprograms.fi](http://www.theranchprograms.fi).

There you can book the most popular activities including husky, reindeer and snowmobile rides, the Aurora Chase program and find offers for car rental. At [www.theranchprograms.fi](http://www.theranchprograms.fi) you can always see the schedules and availabilities in real time, and you can book the selected activities with or without transfers. The schedules for the different activities for upcoming winter are released for bookings on the website always by June at the latest.





# LEVI

Only a 15-minute drive away from Northern Lights Ranch is Levi - a year-round activity resort and the biggest ski resort in the Nordic countries. Levi is at the same time a small holiday town, which offers a wide range of activities, shops, restaurants, and various other services and experiences to the visitors. You can view and make bookings for a wide variety of activities and excursions that Levi has to offer by clicking [\*\*HERE\*\*](#).

Please note, that we do not make activity bookings on behalf of our guests, but we are always happy to give guidance and book transfers if needed to/from the activities.

During the winter season from 15 November until 31 March we offer our guests a complimentary shuttle service to Levi in the morning and return to Northern Lights Ranch in the afternoon. The shuttle needs to always be booked a day in advance at the latest.

## ACCOMMODATION

Our season 2025-26 begins on 28 August 2025 and lasts until 15 April 2026.

The rates of the cabins change during the season based on availability. You can check for rates and availabilities in real-time from our online reservation system at [www.theranch.fi](http://www.theranch.fi) and by choosing "Book now" or by clicking [HERE](#).

In case you would need some assistance in making the booking, then you can always contact us by email [info@theranch.fi](mailto:info@theranch.fi).

Please note that individual requests regarding your selected accommodation options can always be addressed to us by email regarding eg. an early check in or late check out or an individual cabin allocation. However, nothing can be guaranteed until the time of your arrival as we then always must check the situation regarding the previous and following reservations as well.

Rates include VAT, breakfast, linen wear, towels, and daily cleaning. Free Wi-Fi is available in all cabins.

## CATERING (INCLUDING VAT)

## DAILY RATE

- Pre-booked 3-course dinner set menu.....69 € / person  
Children 3-12 yrs -50 % discount for meals with separate menus
- Room service (to be ordered in advance).....30 € / order  
Other catering options and room service available by request at separate cost

From the beginning of the season until the end of October and in April breakfasts are either served in the restaurant or delivered daily to the cabins always on the previous day which the guests will always be notified of in advance. Dinners are then always served by default in the restaurant but can at times also be delivered to the cabins.

From the beginning of November until the end of March the restaurant is open daily serving breakfasts and dinners. Light snacks and lunch options are then also available during the daytime.

## RESERVATION AND CANCELLATION TERMS

Due to our limited accommodation capacity and remote location, reselling cabins at Northern Lights Ranch in the event of late cancellations is challenging. Therefore, we enforce a strict reservation and cancellation policy as follows:

### TOUR OPERATORS, TRAVEL AGENCIES, AND OTHER RESELLERS & GROUP BOOKINGS (MIN. 5 CABINS)

- Tour operators, travel agencies, and other resellers will be invoiced upon receiving confirmation of a reservation. Payment is due on the date when the reservation becomes non-refundable, based on the number of cabins booked.
- **For individual reservations of 1-4 cabins:** Cancellations can be made up to 60 days prior to the arrival date for a full refund. After this period, all cancellations are non-refundable.
- **For group reservations of 5-12 cabins:** Cancellations can be made up to 120 days prior to the arrival date for a full refund. After this period, all cancellations are non-refundable.
- **For group reservations of 13 or more cabins:** Cancellations can be made up to 180 days prior to the arrival date for a full refund. If cancellations are made 121-179 days prior to arrival, 50% of the reservation value can still be refunded, and/or changes to the number of cabins can be made in equal amounts. After this period, all cancellations are non-refundable.

### INDIVIDUAL GUESTS FOR BOOKINGS OF 1-4 CABINS

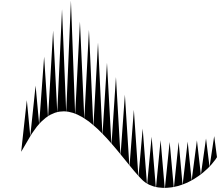
- Individual clients must prepay the full amount (100% of the reservation value) at the time of booking.
- Cancellations can be made up to 60 days prior to the arrival date for a full refund. After this period, all cancellations are non-refundable.

### ALL BOOKINGS

**All cancellations must be made via email to [reservations@theranch.fi](mailto:reservations@theranch.fi).** Please include your reservation/confirmation number when notifying us of a cancellation.

If guests or resellers have insurance covering non-refundable cancellations, we can provide proof of the cancelled accommodation, and the amount paid if needed.

**NB! We always recommend verifying before making a booking that your insurance coverage includes potential late cancellation needs.**



**NORTHERN  
· LIGHTS ·  
R A N C H**

## **BOOKINGS & CONTACT**

The easiest and most convenient way to book your stay with us to do it online at [\*\*www.theranch.fi\*\*](http://www.theranch.fi)


You can also contact us by email or by calling and we will be happy to assist you with your inquiry!


Address:

Northern Lights Ranch,  
Ounasjoentie 1619, FIN - 99140 Kõngäs

Tel: +358 (0)44 7700 350

[\*\*info@theranch.fi\*\*](mailto:info@theranch.fi)

 [\*\*Northern Lights Ranch\*\*](https://www.facebook.com/NorthernLightsRanch)

 [\*\*northernlightsranch\*\*](https://www.instagram.com/northernlightsranch)

[\*\*www.theranch.fi\*\*](http://www.theranch.fi)